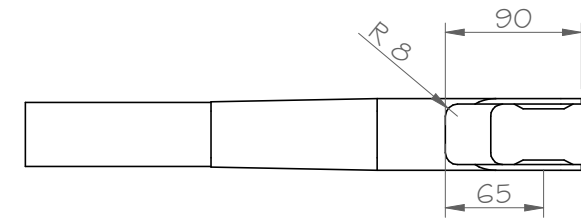
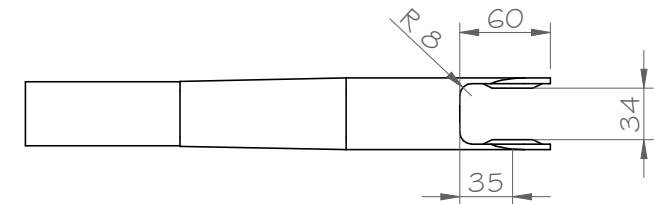


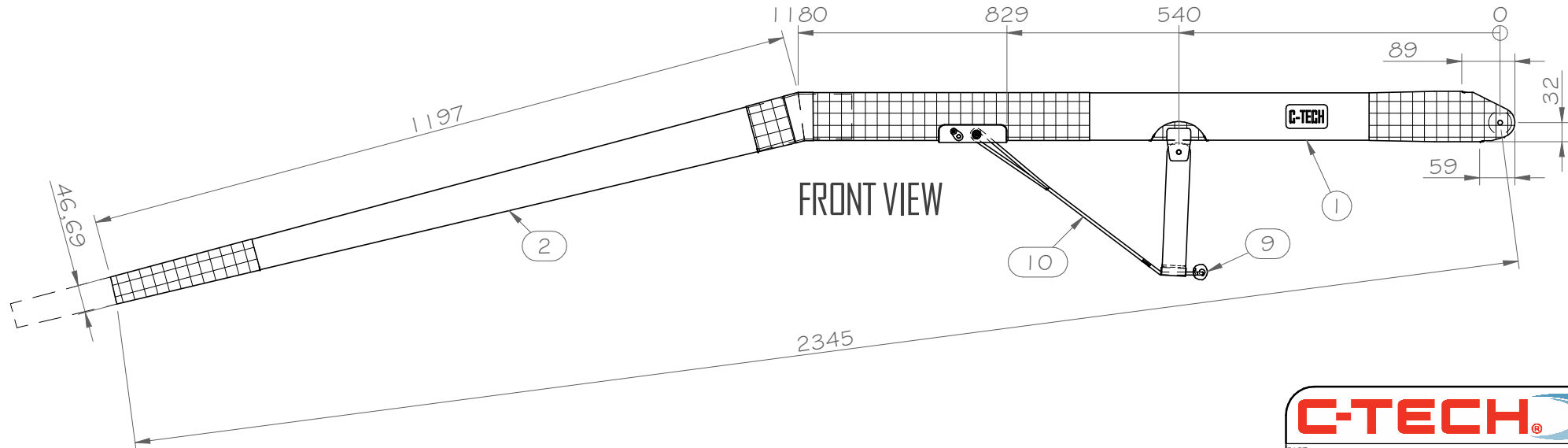
Item Number	Part Number	Description	Revision number	Material	Quantity	Mass (Quantity)
	02-0149	Moth Boom Kinked Internal type	B			1,793 kg
1	02-0157	Moth Boom Front Half	B	Carbon Fibre Solid	1	0,846 kg
2	02-0157	Moth Boom Aft Half	A	Carbon Fibre Solid	1	0,686 kg
3	02-0022	Washer-Carbon-47odx5mm	A	Carbon Plate	2	0,016 kg
4	02-0023	Moth Boom Bent 15deg int slve	A	Carbon Fibre Solid	1	0,127 kg
5	02-0024	Moth Boom Bent 15 deg cover	B	Carbon Fibre Solid	2	0,006 kg
6	02-0028	Moth Boom Vanglever Hanger	B		1	0,000 kg
7	02-0032	Moth Boom Vanglever	A		1	0,000 kg
8	07-0023	RF2G5 Clevis Pin	A	Stainless Steel, 316	1	0,008 kg
9	07-0021	TyeTec NMP 261010	A	Aluminium, 6061-T6	1	0,006 kg
10	02-0034	Moth Boom Strop	C	Dynex	1	0,013 kg
11	02-0025	Moth Boom Sheet Hanger	E	Carbon Plate	1	0,052 kg
12		Retrofit Main Sheet Pin 6mm			1	0,000 kg
13*	02-0184	Moth Vang Pin Ti 12.7mm	A	Ti, 6AL4V	1	0,025 kg
14	07-0071	Bolt BH Socket M5x20		Stainless Steel, 316	2	0,006 kg
15*	07-0104	Washer 5x15x1-2mm SS	A	Stainless Steel, 316	1	0,001 kg



TOP CUT OUT
1:5



BOTTOM CUTOUT
1:5



C-TECH

PART: 02-0149

DESCRIPTION: Moth Boom Kinked Internal type

TITLE: Assembling Instructions

DWG NO. 02-0149 SHEET 1 of 2

SCALE: 1:10 SHEET SIZE: A4 Project No.:

REV	DESCRIPTION	DATE	DRAWN	APPROVED
AI	Released	25/06/2018	Thomas Mellan	TW

DIMENSIONS ARE IN MILLIMETERS
 0 = ±1
 0.0 = ±0.1
 0.00 = ±0.01
 ANGLES = ±0.1°

C-Tech reserve all rights in this document and in the information contained therein.
 Reproduction, use or disclosure to third parties without express authority is strictly forbidden.